



WHERE TO FIND US



Winefred Lake Lodge

HOW TO CONTACT US

Web: www.winefredlakelodge.com
E-Mail: info@winefredlakelodge.com
Telephone/Fax: (780) 713-5578
Mail: Box 20008, Conklin, AB T0P 1H0



Printed in Canada

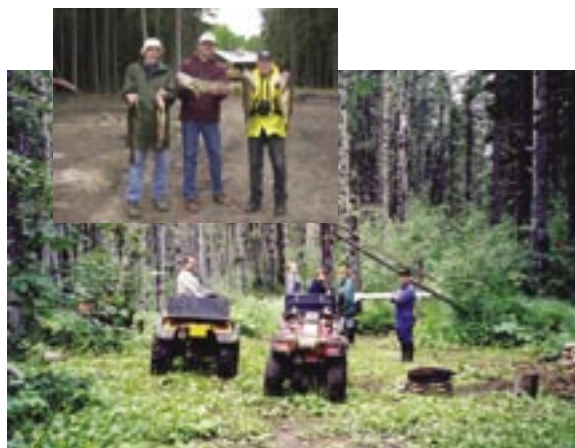
Northern Alberta's Favorite Wilderness Resort!



Winefred Lake Lodge is situated on a quiet, sandy bay along the southeast shore of Winefred Lake. Just a 5-hour drive from Edmonton, Winefred Lake is famous for its trophy-sized Walleye & Northern Pike, its sandy beaches and spectacular sunsets.

In this unique northern wilderness you will experience excellent fishing, up to 20 hours of daylight and unparalleled family adventure.

View and photograph wildlife in its natural habitat, stroll our beaches, enjoy our clean, crisp northern air and come to appreciate both the ruggedness and tranquility of Alberta's north.



Winefred Lake Lodge Welcomes You!

Northern Alberta's favorite wilderness resort, Winefred Lake Lodge is renowned for providing luxury in a pristine wilderness setting.

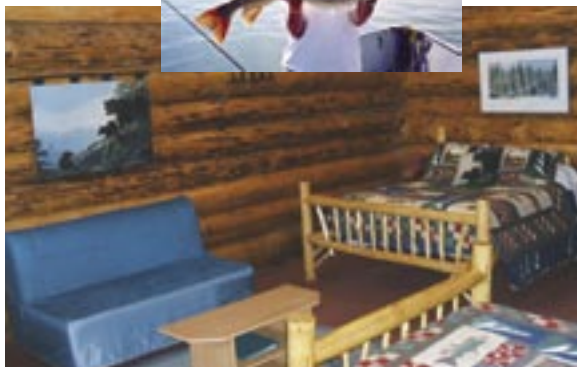
Our handcrafted log lodge has all the amenities you would expect from a 4-star property.

- Full-service & light-housekeeping packages
- 3 bedroom cabins
- Boat rentals
- Satellite TV in every room
- High speed internet access
- Outdoor hot tub
- Licensed lounge
- Delicious homestyle meals
- Large central fire pit
- Horseshoe pit
- Trophy-sized Walleye & Northern Pike
- Wildlife viewing
- Bird watching
- Guided fishing & hunting
- Licensed Outfitter, Alberta Professional Outfitters Society
- Ice fishing
- Snowmobiling - guided trips available
- An ideal location for meetings, retreats or incentive programs



FULL SERVICE PLAN

Includes: accommodation, all meals, boat & 20 hp motor. Also includes custom fish-cleaning & freezer service.



CABIN RENTALS

Each cabin is fully furnished and comes complete with bedding, kitchen utensils, coffee maker, dishes, pots & pans and gas barbeque.

EAGLE'S NEST SUITES

One bedroom and two bedroom suites available.

Includes:

- 2 queen-size beds
- private bathroom/shower
- satellite TV
- high speed internet
- full stove/oven
- half-size fridge
- central barbeque area
- fold-down futon in living room



Reservations for Lunch and Dinner in the main dining room can be arranged for an additional cost.

WINEFRED LAKE CONFERENCE CENTRE

Available for groups of up to 50 people. Opens Summer of 2008.

EXPERIENCE THE BACK COUNTRY

Guided Quad/ATV and Snowmobile Tours:

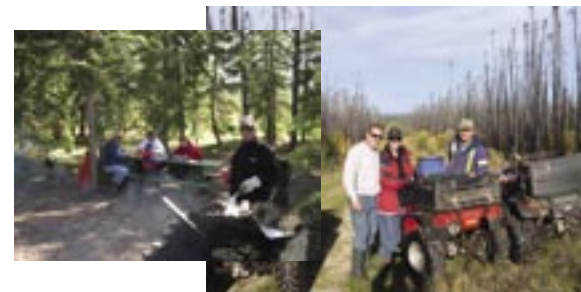
BOAT RENTALS

Includes: 16' aluminum boat & 20 hp Yamaha Motor (Calendar day & hourly rates only)



WINEFRED LAKE TENT CAMP

Accommodation is in one of 5 Outfitter-style, wall tents. Units are complete with bunks or wood cots, wood stove, picnic tables and pit toilets.



THE FINE PRINT

- A \$250 deposit is required to confirm your reservation. Deposit is non-refundable unless notified 30 days prior to arrival.
- Due to the nature of our high demand business, early check-outs or otherwise unfulfilled reservations will be charged full reservation amount (i.e., deciding to leave a day early because of illness, bad weather, personal commitments, etc).
- Check-in time: 2:00 pm
- Check-out time: 11:00 am
- Prices & Policies are subject to change without notice.
- A 15% gratuity will be added to all groups of 6 or more.

